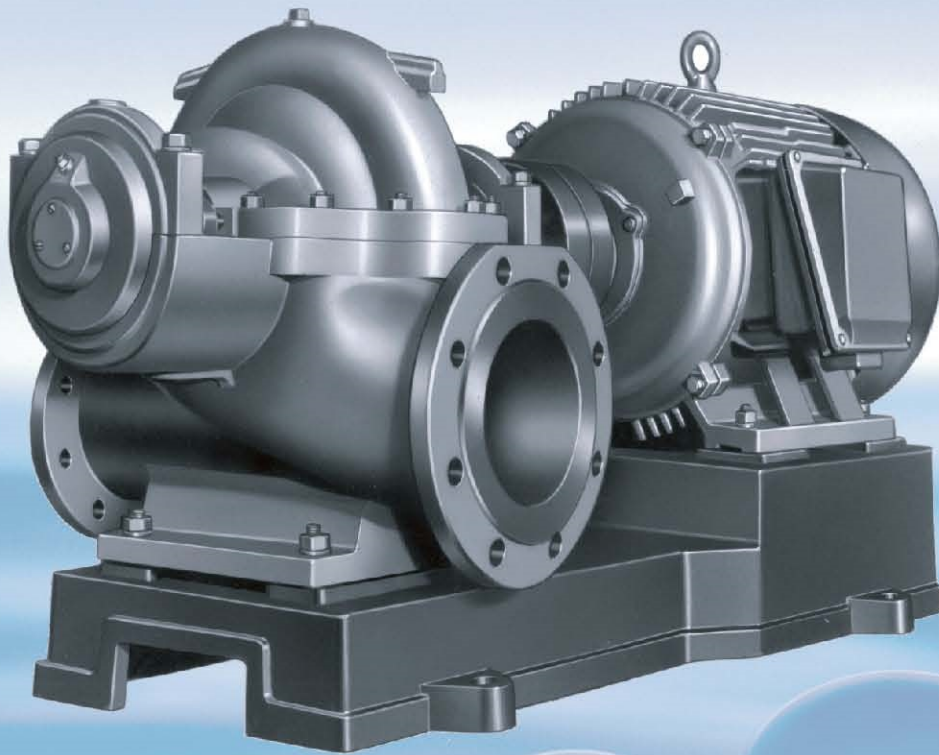


DH

單級雙吸臥式離心泵 SINGLE-STAGE DOUBLE-SUCTION HORIZONTAL CENTRIFUGAL PUMPS



ISO 9001-ISO 14001 認證合格

川源股份有限公司
GSD INDUSTRIAL CO., LTD.

DH型單級雙吸式離心泵浦

簡介與用途

DH型單級雙吸水平中開臥式離心泵，具有雙向對稱吸入、自行平衡軸向力的特點，結構緊密、性能範圍廣、使用可靠、維修方便。適用於輸送不含固體顆料及溫度不超過80°C的清水或物理、化學性質類似水之液體。主要用途：

1. 工廠、礦山、城市排水
2. 發電廠、水利工程及農田灌溉

GENERAL DESCRIPTION

Type DH single-stage, double-suction horizontally split centrifugal pump can be used to double-direction symmetry suction and balance axial automatically. This pump features rational design, compact structure, wide range, reliable operation and easy of maintenance. It can be used to deliver clear liquid and should not contain solid grain at temperature below 80°C or other liquid with their chemical composition & physical characteristics just like water. Main application:

1. Water supply and discharge for factory, mine, and civil.
2. Water supply for power plant, water treatment, and agricultural irrigation.

型號說明 TYPE DESCRIPTION

DH 250-485-65

額定揚程(m)
Rated Head

額定水量(m³/h)
Rated Capacity

入口直徑(mm)
Inlet Diameter

機型：單級雙吸臥式離心泵

Type: Single Stage Double Suction Horizontal Centrifugal Pump

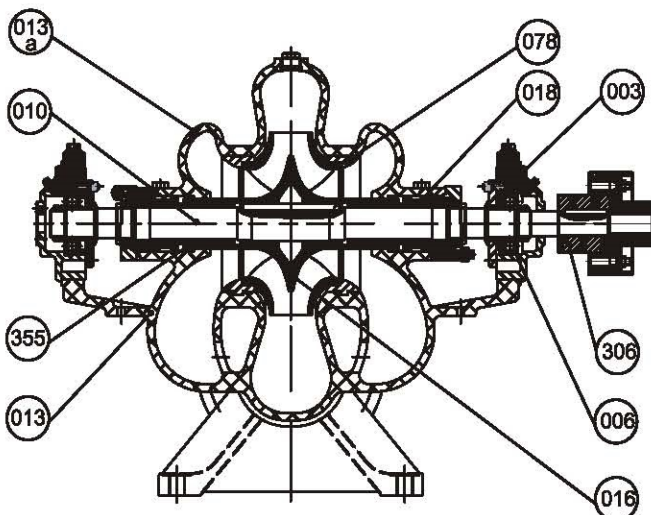
結構特性

- (1) 泵體為水平中開式，吸入和吐出口均在泵軸心線下方，拆修時不需拆卸管路及電動機就可檢查轉子部件。
- (2) 葉輪為單級雙吸式葉輪。
- (3) 軸封採用機械軸封。
- (4) 軸承潤滑方式為油脂潤滑。
- (5) 傳動通過撓性聯軸器由電動機驅動本泵，從傳動方向看水泵為逆時針方向旋轉（亦可按特殊訂貨供應順時針方向旋轉）

STRUCTURE INSTRUCTION

- (1) The pump body is horizontally split type. The motor and pipelines may not be necessarily striped off for repair work as the inlet and outlet are all positioned below the pump axial. It is easy to check the rotor part of the pump.
- (2) Impeller type is single-stage, double-suction.
- (3) Apply Machnical Seal.
- (4) The lubrication method of the bearing adopts grease lubrication.
- (5) A elastic shaft coupling is used to connect the pump and motor to drive. The pump shaft runs counter clockwise from the driven side.
(The rotation of pump shaft also can be clockwise according to customer's special requirement.)

結構簡圖 STRUCTURE DIAGRAM



材質表 (MATERIAL TABLE)

NO.	名稱	NAME	材質(MATERIAL) ASTM	材質(MATERIAL) JIS
003	軸承座	Bearing housing	ASTM A48	FC200
006	軸承	Bearing	NSK(or SKF)	NSK(or SKF)
010	主軸	Shaft	ASTM A276	SUS420
013	下泵本體	Pump casing	ASTM A48	FC200
013a	上泵本體	Pump casing	ASTM A48	FC200
016	葉輪	Impeller	ASTM A48	FC200
018	機械軸封	Machanical seal	Tungsten-Carbide	Tungsten-Carbide
078	磨耗環	Wear ring	ASTM B584	BC6
306	連軸器	Coupling	ASTM A48	FC200
355	軸套	Shaft sleeve	ASTM B584	BC6

※其他材質需求，可依客戶指定製作。
Inquiry of specified material is welcome.

60HZ 性能表 PERFORMANCE TABLE

型號 Model	流量Capacity		揚程Head m	轉速 Speed r/min	電機功率 Motor KW	效率 Eff %	NPSHr m	型號 Model	流量Capacity		揚程Head m	轉速 Speed r/min	電機功率 Motor KW	效率 Eff %	NPSHr m
	m ³ /h	CMM							m ³ /h	CMM					
DH150-148-24	89	1.5	29	1750	15	76	3.0	DH200-393-109	236	3.9	120	185	74	3.3	
	148	2.5	24			81.5			393	6.6	109		80		
	178	3.0	23			79			472	7.9	102		78		
DH150-174-27	104	1.7	31		18.5	76	6.4	DH200-475-29	285	4.8	36	55	76	3.5	
	174	2.9	27			82.5			475	7.9	29		86		
	208	3.5	23			81.5			570	9.5	24		83		
DH150-169-42	101	1.7	49		30	73	4.0	DH200-531-30	318	5.3	38	55	78	3.4	
	169	2.8	42			78			531	8.9	30		87		
	203	3.4	39			77.2			637	10.6	25		84		
DH150-222-44	133	2.2	51		45	74.2	5.2	DH200-488-50	293	4.9	61	90	76	4.4	
	222	3.7	44			80			488	8.1	50		84		
	266	4.4	41			79			586	9.8	43		81		
DH150-194-74	117	1.9	84		75	64	4.6	DH200-535-54	321	5.4	63	110	76	4.3	
	194	3.2	74			72			535	8.9	54		85		
	233	3.9	66			68			642	10.7	48		82.5		
DH150-222-74	133	2.2	87	75	66	4.1	DH200-526-86	316	5.3	97	185	74	3.0		
	222	3.7	74		73			526	8.8	86		81			
	266	4.4	64		71			632	10.5	77		79			
DH200-285-21	171	2.9	27	1750	22	75	2.3	DH200-618-95	370	6.2	106	220	74	4.6	
	285	4.8	21			84.5			618	10.3	95		82		
	342	5.7	18			82			741	12.4	84		80		
DH200-328-21	197	3.3	26		30	77	2.3	DH200-643-129	385	6.4	151	335	73	3.8	
	328	5.5	21			85.5			643	10.7	129		79		
	394	6.6	17			82			771	12.9	112		75		
DH200-289-36	173	2.9	43		37	76	7.8	DH200-699-151	419	7.0	168	450	72	4.0	
	289	4.8	36			83			699	11.7	151		80		
	347	5.8	30			80			839	14.0	138		78		
DH200-322-38	193	3.2	45		45	75.5	3.4	DH250-582-20	432	7.2	23	45	80	3.8	
	322	5.4	38			84			582	9.7	20		85.8		
	387	6.5	33			82			691	11.5	16		78		
DH200-332-61	199	3.3	69		90	72.5	3.0	DH250-582-35	432	7.2	39	75	80	3.5	
	332	5.5	61			79			582	9.7	35		85.8		
	398	6.6	55			77.5			691	11.5	27		82		
DH200-372-67	223	3.7	74	110	72	3.0	DH250-582-56	432	7.2	61	132	76	3.2		
	372	6.2	67		80			582	9.7	56		83.6			
	446	7.4	61		78			734	12.2	46		79			
DH200-351-100	210	3.5	112	150	73	4.3	DH250-582-94	432	7.2	102	280	75	3.0		
	351	5.9	100		79			582	9.7	94		78.6			
	421	7.0	92		77			734	12.2	84		74			



DH型單級雙吸式離心泵浦

60HZ 性能表 PERFORMANCE TABLE

型號 Model	流量Capacity		揚程Head	轉速 Speed r/min	電機功率 Motor KW	效率 Eff %	NPSHr m	型號 Model	流量Capacity		揚程Head	轉速 Speed r/min	電機功率 Motor KW	效率 Eff %	NPSHr m
	m ³ /h	CMM	m						m ³ /h	CMM	m				
DH300-948-17	734	12.2	20	1750	75	80	5.5	DH500-2424-141	1944	32.4	164	1170	1200	78	4.0
	948	15.8	17			84.8			2424	40.4	141			79.5	
	1080	18.0	14			74			2808	46.8	114			74	
DH300-948-27	734	12.2	32		90	80	5.2	DH600-3804-32	2592	43.2	36	1170	450	82	7.0
	948	15.8	27			86.8			3804	63.4	32			88	
	1122	18.7	23			85			4320	72.0	26			82	
DH300-948-46	734	12.2	52		160	80	4.6	DH600-3804-46	2592	43.2	52	1170	560	76	7.0
	948	15.8	46			86.8			3804	63.4	46			89	
	1080	18.0	40			80			4320	72.0	39			85	
DH300-948-84	691	11.5	91		315	75	4.4	DH600-3804-68	2592	43.2	81	1170	800	80	6.5
	948	15.8	84			84.2			3804	63.4	68			88.1	
	1166	19.4	72			80			4320	72.0	58			86	
DH300-948-130	708	11.8	134		560	74	4.0	DH600-3804-108	2592	43.2	121	1170	1600	87	6.0
	948	15.8	130			79.6			3804	63.4	108			88	
	1123	18.7	118			75			4320	72.0	96			80	
DH350-1512-23	1166	19.4	29	1750	132	83	7.1	DH600-3804-144	2592	43.2	158	1170	2000	78	6.0
	1512	25.2	23			85.3			3804	63.4	144			85	
	1728	28.8	19			74			4320	72.0	132			84	
DH350-1512-37	1166	19.4	43		220	80	6.7	DH800-6600-32	5184	86.4	36	875	710	82	7.0
	1512	25.2	37			87.5			6600	110.0	32			89	
	1728	28.8	32			82			7776	129.6	27			86	
DH350-1512-63	1166	19.4	72		355	81	6.3	DH800-6600-46	5184	86.4	50.4	875	1250	82	7.0
	1512	25.2	63			87.5			6600	110.0	46			89	
	1771	29.5	53			79			7776	129.6	41.8			87	
DH350-1512-108	1166	19.4	115		630	78	5.8	DH800-6600-68	4800	80.0	73.4	875	1600	91	6.5
	1512	25.2	108			85.2			6600	110.0	68			90	
	1728	28.8	94			80			7776	129.6	60.5			88	
DH350-1512-180	1020	17.0	202		1200	70	5.4	DH800-6600-109	4800	80.0	115	875	2500	79	6.0
	1512	25.2	180			80.5			6600	110.0	109			88	
	1992	33.2	144			72			7800	130.0	102			87	
DH500-2424-19	1944	32.4	22	1170	160	79	5.7	DH800-5280-20	3600	60.0	23	700	355	80	5.0
	2424	40.4	19			83			5280	88.0	20			88	
	2808	46.8	14			80			6240	104.0	18			85	
DH500-2424-32	1944	32.4	35		280	77	5.2	DH800-5280-30	3600	60.0	33.1	700	560	80	4.5
	2424	40.4	32			84			5280	88.0	30			88	
	2808	46.8	27			85			6240	104.0	26			85	
DH500-2424-50	1944	32.4	58		400	85	4.8	DH800-5280-43	3600	60.0	50.4	700	800	80	4.0
	2424	40.4	50			88			5280	88.0	43			89	
	2808	46.8	40			85			6240	104.0	37.4			86	
DH500-2424-85	1944	32.4	96		710	79	4.5	DH800-5280-71	3600	60.0	80	700	1600	80	4.0
	2424	40.4	85			83			5280	88.0	71			87	
	2808	46.8	68			80			6600	110.0	62			85	

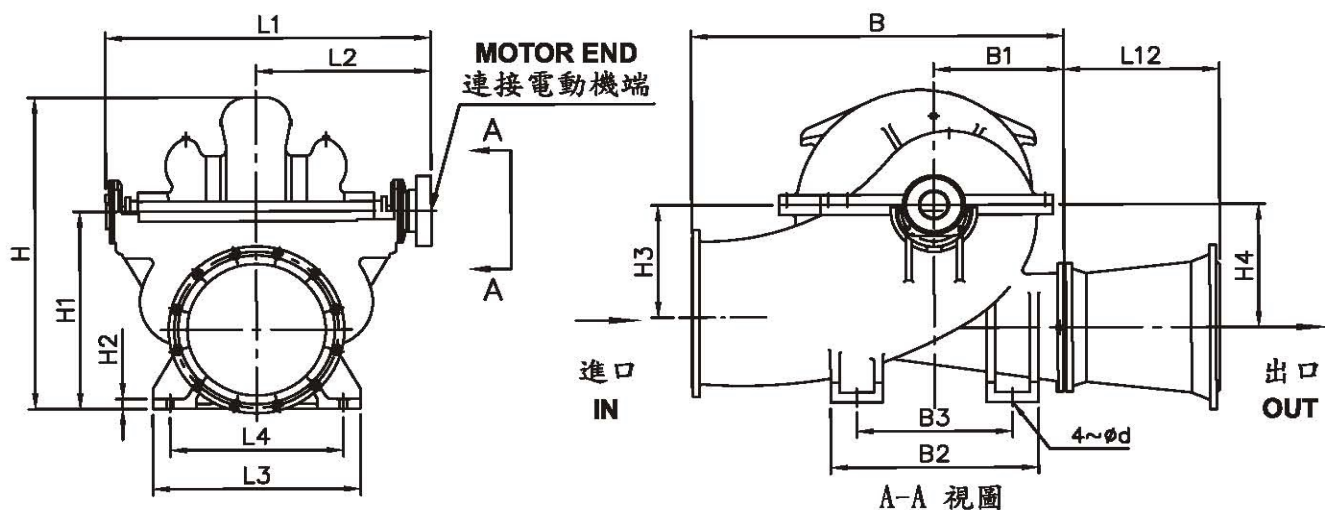
50HZ 性能表 PERFORMANCE TABLE

型號 Model	流量Capacity		揚程Head	轉速 Speed r/min	電機功率 Motor KW	效率 Eff %	NPSHr m	型號 Model	流量Capacity		揚程Head	轉速 Speed r/min	電機功率 Motor KW	效率 Eff %	NPSHr m	
	m ³ /h	CMM	m						m ³ /h	CMM	m					
DH250-485-65	360	6.0	71.0	1470	132	71	3.65	DH500-2020-35	1620	27.0	40.0	970	250	85	4.8	
	486	8.1	65.1			65.1			88							
	612	10.2	56.0			56			85							
DH250-485-39	360	6.0	42.5		75	75	4.27	DH500-2020-22	1620	27.0	24.5		185	80	5.2	
	486	8.1	38.5			82			84							
	612	10.2	32.5			80			79							
DH250-485-24	360	6.0	27.0		45	80	4.0	DH500-2020-13	1620	27.0	15.0		90	79	5.7	
	486	8.1	23.5			86			83							
	576	9.6	19.0			82			80							
DH250-485-14	360	6.0	17.5		30	80	6.0	DH600-3170-100	2160	36.0	110.0		1400	78	6.0	
	486	8.1	14.0			85			85							
	576	9.6	11.0			78			84							
DH300-790-90	590	9.8	98.0		1470	315	74	3.5	DH600-3170-75	2160	36.0		84.0	900	87	6.0
	792	13.2	90.0				77.5			88						
	936	15.6	82.0				75			80						
DH300-790-58	576	9.6	65.0	185		80	4.66	DH600-3170-47	2160	36.0	56.0	560	80	6.5		
	792	13.2	58.0			83.5			89							
	972	16.2	50.0			79			86							
DH300-790-32	612	10.2	36.4	90		80	4.75	DH600-3170-32	2160	36.0	36.0	400	76	7.0		
	792	13.2	32.2			83.5			89							
	900	15.0	29.5			82.2			85							
DH300-790-19	612	10.2	23.0	55		80	5.2	DH600-3170-22	2520	42.0	25.0	250	82	7.0		
	790	13.2	19.4			82			88							
	935	15.6	14.0			75			82							
DH300-790-12	612	10.2	14.5	37		80	5.5	DH800-5500-76	4000	66.7	80.0	1600	79	6.0		
	792	13.2	12.0			81			88							
	900	15.0	10.0			74			87							
DH350-1260-125	850	14.2	135.0	1450	710	67	5.0	DH800-5500-47	4320	72.0	51.0	1000	91	6.5		
	1260	21.0	125.0			74.5			90							
	1660	27.7	100.0			70			88							
DH350-1260-75	972	16.2	80.0		355	77	5.65	DH800-5500-32	4320	72.0	35.0	630	82	7.0		
	1260	21.0	75.0			80			89							
	1440	24.0	65.0			79			87							
DH350-1260-42	972	16.2	48.5		220	81	6.5	DH800-5500-22	4320	72.0	25.0	450	82	7.0		
	1260	21.0	42.0			84			89							
	1476	24.6	35.0			79			86							
DH350-1260-26	972	16.2	32.0		132	85	5.81	DH800-4400-49	3000	50.0	54.0	800	80	4.0		
	1260	21.0	26.0			88			87							
	1440	24.0	22.0			82			85							
DH350-1260-15	972	16.2	19.3		75	80	6.5	DH800-4400-30	3000	50.0	35.0	450	80	4.0		
	1260	21.0	15.1			81			89							
	1440	24.0	12.3			74			86							
DH500-2020-98	1620	27.0	114.0	970	800	78	4.0	DH800-4400-20	3000	50.0	23.0	315	80	4.5		
	2020	33.7	98.0			79.5			88							
	2340	39.0	79.0			74			85							
DH500-2020-59	1620	27.0	68.0		450	79	4.5	DH800-4400-14	3000	50.0	16.0	250	80	5.0		
	2020	33.7	59.0			83			88							
	2340	39.0	47.0			80			85							



DH型單級雙吸式離心泵浦

外型圖 OUTLET WITHOUT BASE



60HZ 泵體不含底座尺寸表 DIMENTION WITHOUT BASE

型號 Model	L1	L2	L3	L4	B	B1	B2	B3	H	H1	H2	H3	H4	L12	N- ϕ d	泵浦重量 (kgs) Pump weight
DH150-148-24	730	415	320	270	660	330	470	400	634	355	32	170	170	300	4- ϕ 20	238
DH150-174-27	730	415	320	270	660	330	470	400	634	355	32	170	170	300	4- ϕ 20	238
DH150-169-42	730	415	320	270	660	330	470	400	664	355	32	170	170	300	4- ϕ 30	250
DH150-222-44	730	415	320	270	660	330	470	400	664	355	32	170	170	300	4- ϕ 30	250
DH150-194-74	730	415	320	270	740	370	470	400	699	355	32	170	170	300	4- ϕ 30	285
DH150-222-74	730	415	320	270	740	370	470	400	699	355	32	170	170	300	4- ϕ 30	285
DH200-285-21	896	515	390	340	740	370	530	450	694	400	36	200	200	350	4- ϕ 25	280
DH200-328-21	896	515	390	340	740	370	530	450	694	400	36	200	200	350	4- ϕ 25	280
DH200-289-36	896	515	390	340	740	370	530	450	714	400	36	200	200	350	4- ϕ 25	310
DH200-322-38	896	515	390	340	740	370	530	450	714	400	36	200	200	350	4- ϕ 25	310
DH200-332-61	896	515	390	340	740	370	530	450	744	400	36	200	200	350	4- ϕ 25	340
DH200-372-67	896	515	390	340	740	370	530	450	744	400	36	200	200	350	4- ϕ 25	340
DH200-351-100	896	515	390	340	900	450	630	560	789	400	40	200	200	350	4- ϕ 30	380
DH200-393-109	896	515	390	340	900	450	630	560	789	400	40	200	200	350	4- ϕ 25	380
DH200-474-29	896	515	390	340	800	400	530	450	729	400	36	200	200	350	4- ϕ 25	390
DH200-531-30	896	515	390	340	800	400	530	450	729	400	36	200	200	350	4- ϕ 25	390
DH200-488-50	896	515	390	340	800	400	530	450	759	400	36	200	200	350	4- ϕ 25	410
DH200-535-54	896	515	390	340	800	400	530	450	759	400	36	200	200	350	4- ϕ 25	410
DH200-526-86	1023	590	480	430	900	450	630	560	885	500	40	200	200	350	4- ϕ 30	506
DH200-618-95	1023	590	480	430	900	450	630	560	885	500	40	200	200	350	4- ϕ 30	506
DH200-643-129	1023	590	480	430	1100	500	770	700	955	500	42	300	490	350	4- ϕ 30	720
DH200-699-151	1023	590	480	430	1100	500	770	700	955	500	42	300	480	350	4- ϕ 30	720

※ 泵出入口方向可依客戶指定。

The direction of inlet and outlet can be changed according to customer's requirement.



60HZ 泵體不含底座尺寸表 DIMENTION WITHOUT BASE

型號 Model	L1	L2	L3	L4	B	B1	B2	B3	H	H1	H2	H3	H4	L12	N-φd	泵浦重量 (kgs) Pump weight
DH250-582-20	903	495	410	350	745	330	510	450	709	450	30	210	215	500	4-φ27	405
DH250-585-35	975	541	440	380	850	400	630	480	728	440	35	230	230	300	4-φ25	420
DH250-582-56	999	563	420	360	890	440	660	480	754	440	35	220	260	300	4-φ25	428
DH250-582-94	1102	605	410	320	900	450	640	480	830	480	32	240	300	500	4-φ26	596
DH300-948-17	1000	540	640	520	1000	500	800	600	826	520	30	250	250	300	4-φ25	472
DH300-948-27	1000	540	640	520	1000	500	800	600	826	520	30	250	260	300	4-φ25	478
DH300-948-46	1190	650	640	520	1040	500	800	600	850	520	50	275	305	300	4-φ40	709
DH300-948-84	1103	605	410	320	1020	500	670	520	885	520	35	265	304	300	4-φ25	773
DH300-948-130	1145	625	500	380	1080	520	720	560	950	560	40	260	340	500	4-φ25	857
DH350-1512-23	1672	885	690	560	1240	540	800	600	1101	635	50	320	433	1000	4-φ40	1500
DH350-1512-37	1182	645	570	480	1100	550	700	560	889	560	30	250	300	300	4-φ25	760
DH350-1512-63	1252	681	720	600	1180	560	810	600	989	620	55	300	310	300	4-φ30	898
DH350-1512-108	1252	681	720	600	1180	560	810	600	989	620	55	320	383	300	4-φ40	1000
DH350-1512-180	1500	800	510	440	1300	650	900	720	963	560	50	260	360	500	4-φ34	1200
DH500-2424-19	1313	718	760	580	1550	775	1020	800	1251	800	55	410	410	----	4-φ41	1650
DH500-2424-32	1382	750	760	580	1460	640	1020	800	1266	800	55	410	410	600	4-φ41	2010
DH500-2424-50	1376	766	760	580	1350	630	1020	800	1270	800	55	415	415	800	4-φ41	2340
DH500-2424-85	1638	905	760	580	1640	810	1020	800	1300	800	55	370	480	800	4-φ41	2750
DH500-2424-141	1642	912	760	580	1550	750	1020	800	1400	800	55	425	545	1000	4-φ41	4330
DH600-3804-32	1471	810	940	760	1790	840	1020	800	1476	950	55	460	460	----	4-φ41	2500
DH600-3804-46	1643	905	940	760	1600	750	1020	800	1490	950	55	480	480	----	4-φ41	2250
DH600-3804-68	1695	940	940	760	1595	745	1020	800	1505	950	55	490	490	600	4-φ41	3850
DH600-3804-108	1695	940	940	760	1900	940	1020	800	1550	950	55	425	555	600	4-φ41	4300
DH600-3804-144	1935	1097	1200	1000	1900	900	1300	1000	1610	950	----	532	588	600	4-φ42	7188
DH800-6000-32	1918	1051	1200	1000	2200	----	1300	1000	1840	1200	----	620	620	----	4-φ48	4500
DH800-6000-46	2120	1170	1200	1000	2250	1000	1300	1000	1920	1200	----	640	640	----	4-φ48	5100
DH800-6000-68	2090	1160	1200	1000	2150	----	1300	1000	1942	1200	----	660	660	----	4-φ48	7300
DH800-6000-109	2330	1270	1200	1000	2350	1150	1300	1000	1985	1200	----	570	745	----	4-φ48	7888
DH800-5280-20	1918	1051	1200	1000	2200	----	1300	1000	1840	1200	----	620	620	----	4-φ48	4500
DH800-5280-30	2120	1170	1200	1000	2250	1000	1300	1000	1920	1200	----	640	640	----	4-φ48	5100
DH800-5280-43	2090	1160	1200	1000	2150	----	1300	1000	1942	1200	----	660	660	----	4-φ48	7300
DH800-5280-71	2330	1270	1200	1000	2350	1150	1300	1000	1985	1200	----	570	745	----	4-φ48	7888



DH型單級雙吸式離心泵浦

50HZ 泵體不含底座尺寸表 DIMENTION WITHOUT BASE

型號 Model	L1	L2	L3	L4	B	B1	B2	B3	H	H1	H2	H3	H4	L12	N-φ d	泵浦重量 (kgs) Pump weight
DH250-485-65	1102	605	410	320	900	450	640	480	830	480	32	240	300	500	4-φ 26	596
DH250-485-39	999	563	420	360	890	440	660	480	754	440	35	220	260	300	4-φ 25	428
DH250-485-24	975	541	440	380	850	400	630	480	728	440	35	230	230	300	4-φ 25	420
DH250-485-14	903	495	410	350	745	330	510	450	709	450	30	210	215	500	4-φ 27	405
DH300-790-90	1145	625	500	380	1080	520	720	560	950	560	40	260	340	500	4-φ 25	857
DH300-790-58	1103	605	410	320	1020	500	670	520	885	520	35	265	304	300	4-φ 25	773
DH300-790-32	1190	650	640	520	1040	500	800	600	850	520	50	275	305	300	4-φ 40	709
DH300-790-19	1000	540	640	520	1000	500	800	600	826	520	30	250	260	300	4-φ 25	478
DH300-790-12	1000	540	640	520	1000	500	800	600	826	520	30	250	250	300	4-φ 25	472
DH350-1260-125	1672	885	690	560	1240	540	800	600	1101	635	50	320	433	1000	4-φ 40	1500
DH350-1260-75	1500	800	510	440	1300	650	900	720	963	560	50	260	360	500	4-φ 34	1200
DH350-1260-42	1252	681	720	600	1180	560	810	600	989	620	55	320	383	300	4-φ 40	1000
DH350-1260-26	1252	681	720	600	1180	560	810	600	989	620	55	300	310	300	4-φ 30	898
DH350-1260-15	1182	645	570	480	1100	550	700	560	889	560	30	250	300	300	4-φ 25	760
DH500-2020-98	1642	912	760	580	1550	750	1020	800	1400	800	55	425	545	1000	4-φ 41	4330
DH500-2020-59	1638	905	760	580	1640	810	1020	800	1300	800	55	370	480	800	4-φ 41	2750
DH500-2020-35	1376	766	760	580	1350	630	1020	800	1270	800	55	415	415	800	4-φ 41	2340
DH500-2020-22	1382	750	760	580	1460	640	1020	800	1266	800	55	410	410	600	4-φ 41	2010
DH500-2020-13	1313	718	760	580	1550	775	1020	800	1251	800	55	410	410	----	4-φ 41	1650
DH600-3170-100	1935	1097	1200	1000	1900	900	1300	1000	1610	950	----	532	588	600	4-φ 42	7188
DH600-3170-75	1695	940	940	760	1900	940	1020	800	1550	950	55	425	555	600	4-φ 41	4300
DH600-3170-47	1695	940	940	760	1595	745	1020	800	1505	950	55	490	490	600	4-φ 41	3850
DH600-3170-32	1643	905	940	760	1600	750	1020	800	1490	950	55	480	480	----	4-φ 41	2250
DH600-3170-22	1471	810	940	760	1790	840	1020	800	1476	950	55	460	460	----	4-φ 41	2500
DH800-5500-76	2330	1270	1200	1000	2350	1150	1300	1000	1985	1200	----	570	745	----	4-φ 48	7888
DH800-5500-47	2090	1160	1200	1000	2150	----	1300	1000	1942	1200	----	660	660	----	4-φ 48	7300
DH800-5500-32	2120	1170	1200	1000	2250	1000	1300	1000	1920	1200	----	640	640	----	4-φ 48	5100
DH800-5500-22	1918	1051	1200	1000	2200	----	1300	1000	1840	1200	----	620	620	----	4-φ 48	4500
DH800-4400-49	2330	1270	1200	1000	2350	1150	1300	1000	1985	1200	----	570	745	----	4-φ 48	7888
DH800-4400-30	2090	1160	1200	1000	2150	----	1300	1000	1942	1200	----	660	660	----	4-φ 48	7300
DH800-4400-20	2120	1170	1200	1000	2250	1000	1300	1000	1920	1200	----	640	640	----	4-φ 48	5100
DH800-4400-14	1918	1051	1200	1000	2200	----	1300	1000	1840	1200	----	620	620	----	4-φ 48	4500

經銷商 (Agent):

如蒙洽詢請指示下列項目 Request for Information:

1. 液體性質 Liquid:
2. 揚程 Head:
3. 水量 Capacity:
4. 動力 Kw(Hp), Pole, Phase, Hz, Voltage:
5. 其他需求 Other:
6. 非型錄標準之特殊規格亦可依指定製作。 Inquiry of specified performance or specification is welcome.
7. 本型錄內容如有變更恕不另行通知。 We serve the right to contents without notice.

NO.226 Hwan Ho St Hsi_Chin City, Taipei Hsien 221, Taiwan R.O.C.
TEL:886-2-26942732 FAX:886-2-26943375 Http://www.gsd-pumps.com
CATALOG REF: 2005.03 - Dh01